



GRAND SERAIL
(Government Palace)-Beirut



Annex IV

Furniture

May 2022



ABDULWAHED CHEHAB
CONSULTING ENGINEERING OFFICE

Contents

I. PHASE -1.....	5
Works in Tender Documents	5
1. Curtains:	6
a. Roll Up Curtain with All Needed Accessories and Tracks for VIP Official General Areas.....	6
Block B East: Ground Floor.....	6
Block A: Second Floor.....	7
b. Double Curtain VIP Official General Areas	8
Block C: Ground Floor	8
Block C Second Floor:.....	9
Block A: Ground Floor (GF)	11
Block A First Floor (F1):	12
Block A Second Floor (F2):	13
Block A Second Floor (F2):	14
Block A Second Floor (F2):	14
Block A Second Floor (F2):	15
c. Double Curtain VIP Private Lounges & Bedrooms	18
Block A Second Floor (F2):	18
d. Double Curtain Official General Offices Areas	23
Double Curtain (Curtain with Sheer).....	23
Block C First Floor.....	23
Double Curtain (Curtain with Sheer and Tracks & Rod).....	26
Block C First Floor.....	26
Double Curtain (Curtain with sheer)	27
Block B East: First Floor	27
Double Curtain (Curtain with Sheer and Tracks and Rods).....	29
Double Curtain (Curtain with sheer)	31
Block A First Floor	31
Double Curtain (Curtain with Sheer and Tracks & Rods)	35
Double Curtain (Curtain with sheer)	35
Block C Second Floor -F2	35
Double Curtain (Curtain with Sheer and Tracks & Rods)	39

Block C Second Floor	39
Double Curtain (Curtain with Sheer).....	42
Block B East: Second Floor -F2	42
Double Curtain (Curtain with Sheer and Tracks & Rods)	44
Block B East Second Floor:	44
e. Sunscreens	46
1. Sun Screen Fabrics in Roll Black Out for Offices	46
2. Sun Screen Fabrics in Rolls No Black Out for Offices (Room 0058)	46
f. Rehabilitation of Existing Curtains:	47
II. PHASE -2.....	48
Works to be Done Upon Financing	48
1. New Offices Cabinets	49
1) Wooden Ready-Made Cabinets	49
a. Grey Cabinets: 10 units - Similar to Existing	49
b. Brown Cabinets (Dark Wood) - Similar to Existing.....	50
c. Brown Cabinets (Light Wood with dark borders) - Similar to Existing.....	51
2) Metal Cabinets	52
a. Steel Metal Storage Cabinets:.....	52
b. Double Tier Metal Locker:.....	52
2. New Customized Wooden Cabinets	52
1) Wooden Cabinets.....	52
a. Wood Cabinet with Space for Server (Computer)	52
b. Wood Cabinet with Space for Cooler & Microwave	52
c. Wood Storage Cabinet with Shelves for Cooler Bottles	52
d. Grey Wood Cabinet to Ceiling.....	52
3. Rehabilitation of Existing Wooden Cabinets' Skirting	53
4. New Wooden Cabinet Similar to Existing	54
5. Closets	55
1) New Closets.....	55
2) Closets Rehabilitation	56
6. New Chairs & Sofas Upholstery and Maintenance	58
a. New Chairs	58

b.	Chairs Maintenance	59
c.	Sofas Maintenance.....	60
d.	Seat and Back seat Cushion Upholstery (Room 0048)	62
e.	Fabrication of New Seats and Back Cushions (Comfortable Sponge & First-Class Fabric)	63
7.	Wooden Tables	64
a)	Tables' Maintenance	64
i.	Rehabilitation of Existing Wooden Square Table -130cm x130cm x 75 cm:.....	64
ii.	Rehabilitation of Existing Wooden Round Tables Top (Diameter 130 cm):	65
b)	New Wooden Tables Similar to Existing	65
i.	New Wooden Square Tables – Similar to Existing:	65
ii.	New Wooden Round Tables Top (Diameter 130 cm):	65
8.	Partitions (PARAVANT): 250cm x 60 cm x 180 cm	66
a.	Wooden Partitions (PARAVANT): 250cm x 60 cm x 180 cm	66
i.	Partitions' Maintenance.....	66
ii.	New Partitions.....	66
b.	Fabric Partition (PARAVANT): 60cm x 250 cm x 180 cm	67
i.	Partitions' Maintenance.....	67
ii.	New Partitions.....	67
9.	Wooden Podium Rehabilitation.....	68
10.	Rehabilitation of Wooden Podium extensions	69
11.	New Wooden Stands.....	70
a.	New Wooden Stands (Similar to Existing).....	70
b.	Rehabilitation of Existing Press Stands	71
12.	Console Tables	72
a.	Wooden Consoles Rehabilitation.....	72
b.	Stone Console	73
c.	Stone Table	74
13.	Conference Tables and Office Chairs	75
a.	Rehabilitation of Minister's Meeting Room Conference Table	75
b.	New Conference Tables	76
c.	New Office Chairs.....	76
14.	Equipment.....	77

a. Ice Makers Machines 77

b. Press Screens..... 77

I. PHASE -1

Works in Tender Documents

الاعمال قيد التلزم

1. Curtains:

a. Roll Up Curtain with All Needed Accessories and Tracks for VIP Official General Areas

Block B East: Ground Floor

Roll up 1st class Fabric:

Official Salon: Room No. 0048: 12 units:



GF-1 module: 12 units:

Height = 3.5 m

Width= 1.5m x 12 units

Block A: Second Floor

F2-1 module (Room 2073): 8 units

Roll up Curtain with sheer (similar to existing type): decorative 1st class Fabric as indicated in drawings



➤ 8 Modules: 8 units curtains

Height = 2.3m

Width= 1.5m x 8 units

b. Double Curtain VIP Official General Areas

Block C: Ground Floor

Double Curtain (Curtain with sheer): decorative American 1st class Fabric as indicated in drawings

Room 0129: 10 units



GF-1 module: 10 units

Height = 4 m

Width= 3m x 10 units

Block C Second Floor:

Double Curtain (Curtain with Sheer): Decorative American 1st Class Fabric as indicated in drawings

F2-1 module (Room 2103): 11 units



1 module: 11 units

Height = 3.5 m

Width= 4m x 11 units

Double Curtain (Curtain with Sheer and Tracks/Rods): Decorative American 1st Class Fabric as indicated in drawings

F2-1 module (Room 2101): 4 units



1 module: 4 units

Height = 3.5 m

Width= 4m x 4 units

Tracks & Rods=2m x 4 units

Block A: Ground Floor (GF)

Double Curtain (Curtain with Sheer): Decorative American 1st Class Fabric as indicated in drawings

Room 0034: 3 units:



GF-1 module: 3 units:

Height = 3.5 m

Width= 4m x 3 units

Room 0035: 7 units



GF-1 module: 7 units

Height = 3.5 m

Width= 4m x 7 units

Block A First Floor (F1):

Double Curtain (Curtain with Sheer): Decorative American 1st Class Fabric as indicated in drawings

F1-2 modules (Room 1003): 3 Units



- For 2 Window: 2 units curtains

Height = 4 m

Width= 4m x 2 units

- For 2 Doors: 1 unit curtain

Height = 4 m

Width= 10m

Block A Second Floor (F2):

F2-3 modules (Room 2003): 7 Units

Double Curtain (Curtain with Sheer and Tracks/Rods): Decorative American 1st Class Fabric as indicated in drawings



- For 2 Side Windows: 2 units curtains
Height = 4m
Width= 4m x 2 units
Tracks & Rods= 1.9m x 2 units
- For 2 double Doors: 2-unit curtain
Height = 4 m
Width= 5m x 2 units
Tracks & Rods= 1.9m x 2 units
- For central 2 windows & double Door: 3-unit curtain
Height = 4 m
Width door = 4m x 1 units
Height = 4 m
Width window = 4 m x 2 units
Tracks & Rods= 1.9m x 3 units

Block A Second Floor (F2):

F2-1 module (Room 2017): 3 Units

Double Curtain (Curtain with Sheer): Decorative American 1st Class Fabric as indicated in drawings



- 3 Window: 3 units curtains
Height = 3.5m
Width= 4m x 3 units

Block A Second Floor (F2):

F2-1 modules (Room 2063): 4 Units

Double Curtain (Curtain with Sheer and Tracks & Rods): Decorative American 1st Class Fabric as indicated in drawings



Curtains & sheer

- All 4 Window: 4 units curtains
Height = 4m
Width= 3m x 4 units
Tracks and rods = 1.9m x 4 units

Block A Second Floor (F2):

F2-1 module (Room 2064): 2 Units as existing shape

Double Curtain (Curtain with Sheer and Curtain Box): Decorative 1st Class Fabric as indicated in drawings

Room 2064: 2 Units



➤ 2 Window: 2 units curtains

Height = 3.5m

Width= 4m x 2 units

F2-1 module (Room 2065): 8 units

Double Curtain (Curtain with Sheer and Tracks & Rods): Decorative American 1st Class Fabric as indicated in drawings



➤ 8 Window: 8 units curtains

Height = 4m

Width= 4m x 8 units

Tracks and rods = 1.9m x 8 units

F2-2 module (Room 2071): 3 units

Double Curtain (Curtain with Sheer): Decorative American 1st Class Fabric as indicated in drawings



- 2 Side Window: 2 units curtains
Height = 4m
Width= 4m x 2 units
- 1 Central Unit (2side Windows & centered Door): 1 unit's curtain
Height = 4m
Width= 10 m x 1 units

F2-1 module (Room 2075): 3 units

Double Curtain (Curtain with Sheer and Tracks & Rods): Decorative American 1st Class Fabric as indicated in drawings



- 3 Window: 3 units curtains
Height = 4m
Width= 4m x 3 units
Tracks and rods = 1.9m x 3 units

c. Double Curtain VIP Private Lounges & Bedrooms

Block A Second Floor (F2):

F2-1 module (Rooms: 2006, 2007 and 2010): 2 units

Double Curtain (Curtain with Sheer): Decorative American 1st Class Fabric as indicated in drawings

Room 2006



- 2 Window: 2 units curtains
Height = 3.5m
Width= 4m x 2 units

Room 2007: 2 units



- 2 Window: 2 units curtains
Height = 3.5m
Width= 4m x 2 units

Room 2010: 2 units



- 2 Window: 2 units curtains
Height = 3.5m
Width= 4m x 2 units

F2-1 module (Room: 2016): 5 units



- 5 Window: 5 units curtains
Height = 3.5m
Width= 4m x 5 units

F2-1 module (Rooms: 2035, 2036 and 2039): 1 unit
Room: 2035: 1 unit



- 2 Window and centered door: 1-unit curtains
Height = 4.5m
Width= 9 m x 1 units

Room: 2036: 1 unit



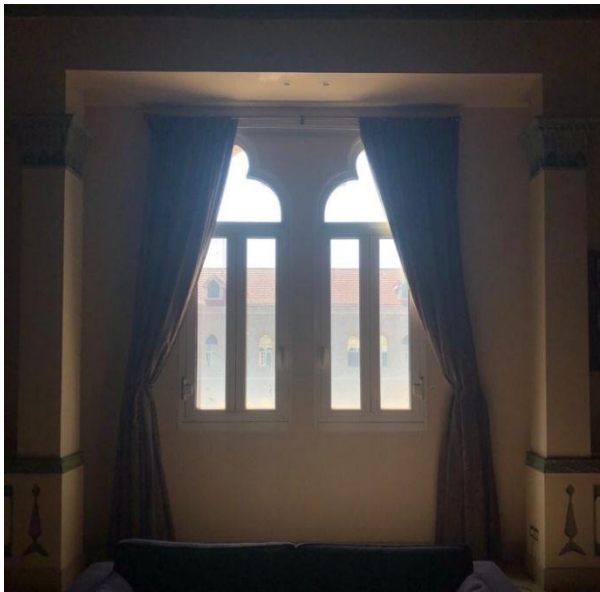
- 1 Window: 1-unit curtains
Height = 4.5m
Width= 2.5 m x 1 unit

Room: 2039: 1 unit



- 1 Window: 1-unit curtains
Height = 4.5m
Width= 2.5 m x 1 unit

F2-1 module (Room: 2050): 1 unit



- 2 Window: 1 unit's curtain
Height = 3.5m
Width= 6m x 1 unit

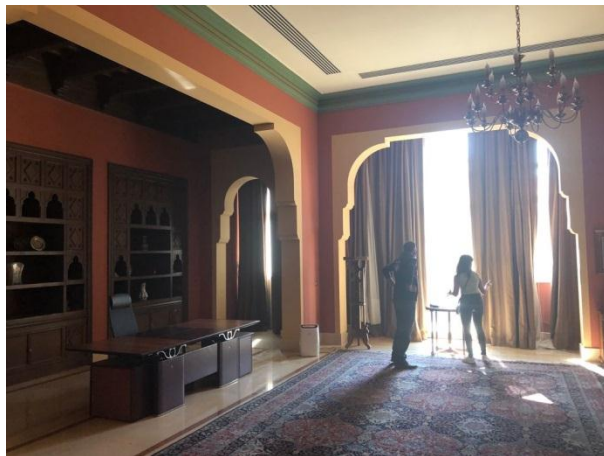
F2-2 module (Rooms: 2052 and 2057): 3 units

Room 2052



- 2 Side Window: 2 units curtains
Height = 4m
Width= 4m x 2 units
- 1 Central Unit (2side Windows & centered Door): 1 unit's curtain
Height = 4m
Width= 10m x 1 units

Room 2057



- 2 Side Window: 2 units curtains
Height = 4m
Width= 4m x 2 units
- 1 Central Unit (2side Windows & centered Door): 1 unit's curtain
Height = 4m
Width= 10m x 1 units

d. Double Curtain Official General Offices Areas

Double Curtain (Curtain with Sheer)

Block C First Floor

Double Curtain (Curtain with Sheer): Decorative American 1st Class Fabric as indicated in drawings
F1-1 module Rooms: 1052, 1054, 1056, 1058, 1064, 1068, 1069, 1072,
Room 1052: 3 units



1 Module opening: 3 units
Height = 3 m
Width= 3m x 3 units

Room 1054: 2 units



1 Module opening: 2 units
Height = 3 m
Width= 3m x 2 units

Room 1056: 3 units



1 Module opening: 3 units
Height = 3 m
Width= 3m x 3 units

Room 1058: 2 units



1 Module opening: 2 units
Height = 3 m
Width= 3m x 2 units

Room 1064: 2 units



1 Module opening: 2 units
Height = 3 m
Width= 3m x 2 units

Room 1069: 5 units



1 Module opening: 5 units
Height = 3 m
Width= 3m x 5 units

Room 1072: 2 units



1 Module opening: 2 units

Height = 3 m

Width= 3m x 2 units

Double Curtain (Curtain with Sheer and Tracks & Rod)

Block C First Floor

Double Curtain (Curtain with Sheer and Tracks & Rod): Decorative American 1st Class Fabric as indicated in drawings

Room 1068: 1 unit



1 Module opening: 1 unit

Height = 3 m

Width= 3m x 1 unit

Tracks and Rods = 1.9 m x 1 unit

Room 1055: 2 units



1 Module opening: 2 units

Height = 3 m

Width= 3m x 2 units

Tracks and Rods = 1.9 m x 2 units

Double Curtain (Curtain with sheer)

Block B East: First Floor

Double Curtain (Curtain with Sheer): Decorative American 1st Class Fabric as indicated in drawings

F1-1 module Rooms: 1034, 1037, 1041, 1043

Room 1034: 2 units



1 Module opening: 2 units

Height = 3 m

Width= 3m x 2 units

Room 1037: 3 units



1 Module opening: 3 units
Height = 3 m
Width= 3m x 3 units

Room 1041: 3 units



1 Module opening: 3 units
Height = 3 m
Width= 3m x 3 units

Room 1043: 2 units



1 Module opening: 2 units
Height = 3 m
Width= 3m x 2 units

Double Curtain (Curtain with Sheer and Tracks and Rods)

Double Curtain (Curtain with Sheer and Tracks and Rods): Decorative American 1st Class Fabric as indicated in drawings

F1-1 module Rooms: 1039, 1040, 1051

Room 1039: 2 units



1 Module opening: 2 units
Height = 3 m
Width= 3m x 2 units
Tracks and Rods = 1.9 m x 2 units

Room 1040: 2 units



1 Module opening: 2 units
Height = 3 m
Width= 3m x 2 units
Tracks and Rods = 1.9 m x 2 units

Room 1051: 2 units



1 Module opening: 2 units
Height = 3 m
Width= 3m x 2 units
Tracks and Rods = 1.9 m x 2 units

Double Curtain (Curtain with sheer)

Block A First Floor

Double Curtain (Curtain with Sheer): Decorative American 1st Class Fabric as indicated in drawings

F1-1 module Rooms: 1005, 1006, 1007A, 1009, 1010A, 1013, 1026, 1029

Room 1005: 3 units



1 Module opening: 3 units

Height = 3 m

Width= 3m x 3 units

Room 1006: 2 units



1 Module opening: 2 units

Height = 3 m

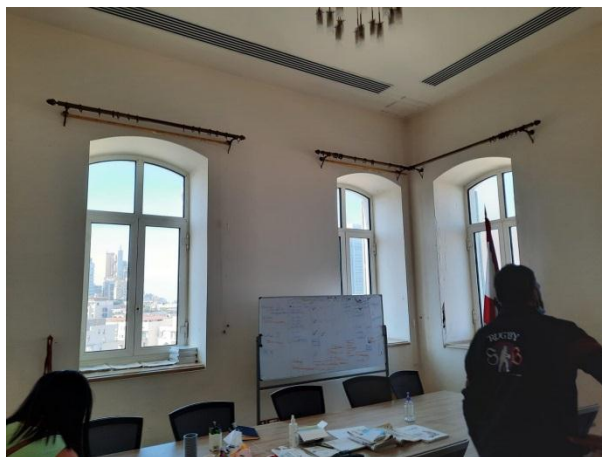
Width= 3m x 2 units

Room 1007A: 1 unit



1 Module opening: 1 unit
Height = 3 m
Width= 3m x 1 unit

Room 1009: 5 units



1 Module opening: 5 units
Height = 3 m
Width= 3m x 5 units

Room 1010A: 1 unit



1 Module opening: 1 unit
Height = 3 m
Width= 3m x 1 unit

Room 1013: 4 units



1 Module opening: 4 units
Height = 3 m
Width= 3m x 4 units

Room 1026: 8 units



1 Module opening: 8 units
Height = 3 m
Width= 3m x 8 units

Room 1029: 3 units



1 Module opening: 3 units
Height = 3 m
Width= 3m x 3 units

Double Curtain (Curtain with Sheer and Tracks & Rods)

Double Curtain (Curtain with Sheer and Tracks & Rods): Decorative American 1st Class Fabric as indicated in drawings

F1-1 module Room1030: 3 units



1 Module opening: 3 units

Height = 3 m

Width= 3m x 3 units

Tracks and Rods = 1.9m x 3 units

Double Curtain (Curtain with sheer)

Block C Second Floor -F2

Double Curtain (Curtain with Sheer): Decorative American 1st Class Fabric as indicated in drawings

F2-1 module Rooms: 2094, 2096, 2098, 2099, 2111, 2112, 2116, 2118, 2119, 2120, 2122, 2124, 2129, 2131, 2132,

Room 2094: 3 units



1 Module opening: 3 units

Height = 3 m

Width= 3m x 3 units

Room 2096: 3 units



1 Module opening: 3 units
Height = 3 m
Width= 3m x 3 units

Room 2098: 2 units



1 Module opening: 2 units
Height = 3 m
Width= 3m x 2 units

Room 2099: 2 units



1 Module opening: 2 units

Height = 3 m

Width= 3m x 2 units

Room 2111: 2 units



1 Module opening: 2 units

Height = 3 m

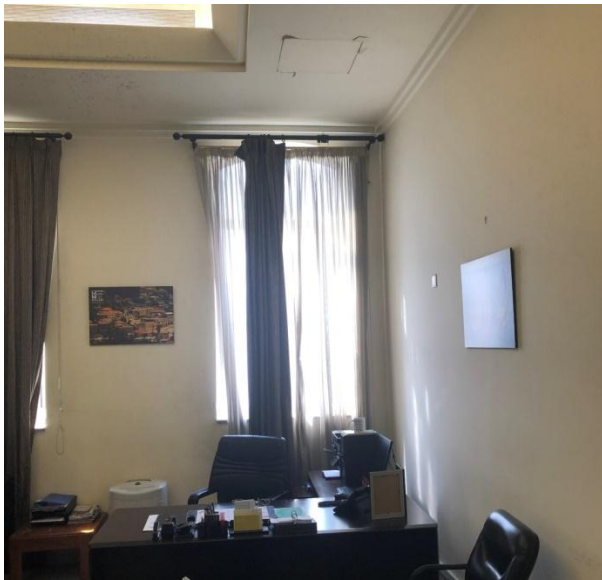
Width= 3m x 2 units

Room 2119: 1 unit



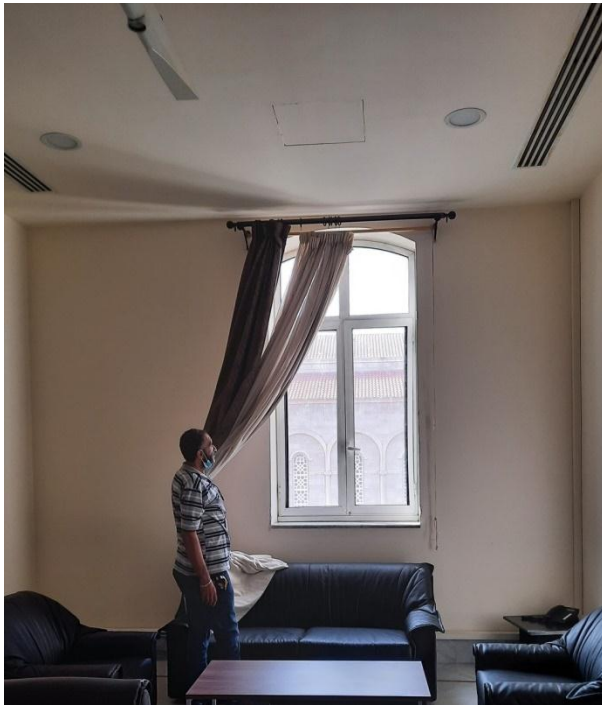
1 Module opening with 2 windows: 1 unit
Height = 3 m
Width= 3m x 1 unit

Room 2131: 2 units



Module opening: 2 units
Height = 3 m
Width= 3m x 2 units

Room 2132: 1 unit



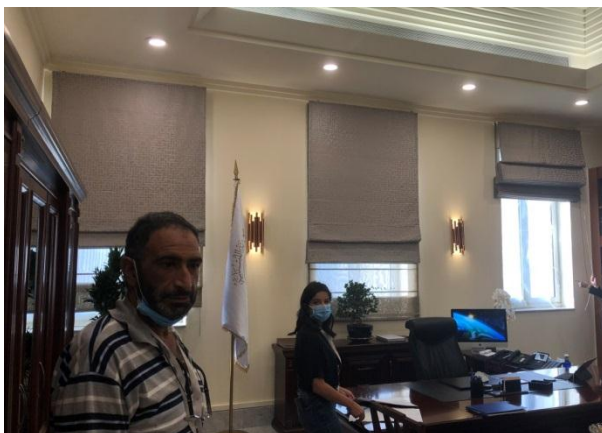
Module opening: 1 unit
Height = 3 m
Width= 3m x 1 unit

Double Curtain (Curtain with Sheer and Tracks & Rods)

Block C Second Floor

Double Curtain (Curtain with Sheer and Tracks & Rods): Decorative American 1st Class Fabric as indicated in drawings

Room 2112: 3 units



1 Module opening: 3 units
Height = 3 m
Width= 3m x 3 units
Tracks and Rods= 1.9 m x 3 units

Room 2116: 2 units



1 Module opening: 2 units

Height = 3 m

Width= 3m x 2 units

Tracks and Rods= 1.9 m x 2 units

Room 2118: 1 unit



1 Module opening: 1 unit

Height = 3 m

Width= 3m x 1 unit

Tracks and Rods =1.9 m x 1 unit

Room 2120: 1 unit



1 Module opening with 2 side windows and central door: 1-unit curtain

Height = 3 m

Width= 7m x 1 unit

Tracks and Rods =5.5 m x 1 unit

Room 2122: 2 units



1 Module opening: 2 units

Height = 3 m

Width= 3m x 2 units

Tracks and Rods= 1.9 m x 2 units

Room 2124: 1 unit

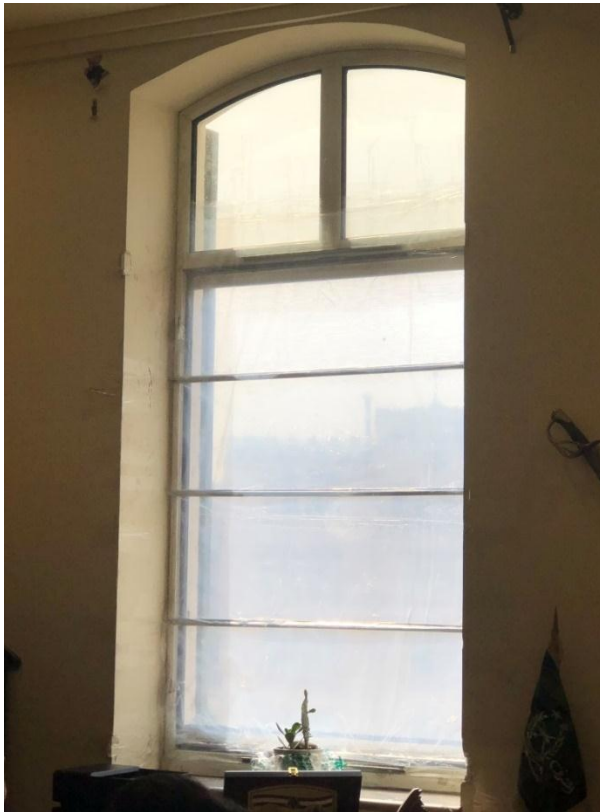
1 Module opening: 1 unit

Height = 3 m

Width= 3m x 1unit

Tracks and Rods= 1.9 m x 1 unit

Room 2129: 3 units



1 Module opening: 3 units

Height = 3 m

Width= 3m x 3 units

Tracks and Rods= 1.9 m x 3 units

Double Curtain (Curtain with Sheer)

Block B East: Second Floor -F2

Double Curtain (Curtain with Sheer): Decorative American 1st Class Fabric as indicated in drawings

F2-1 module Rooms: 2078, 2080, 2081, 2082, 2084, 2086, 2093

Room 2078: 3 Units



1 Module opening: 3 units

Height = 3 m

Width= 3m x 3 units

Room 2080: 3 Units



1 Module opening: 3 units
Height = 3 m
Width= 3m x 3 units

Room 2093: 2 Units



1 Module opening: 2 units
Height = 3 m
Width= 3m x 2 units

Double Curtain (Curtain with Sheer and Tracks & Rods)

Block B East Second Floor:

Double Curtain (Curtain with Sheer and Tracks & Rods): Decorative American 1st Class Fabric as indicated in drawings

Room 2081: 2 Units



1 Module opening: 2 units

Height = 3 m

Width= 3m x 2 units

Tracks and Rods = 1.9m x 2 units

Room 2082: 2 Units



1 Module opening: 2 units

Height = 3 m

Width= 3m x 2 units

Tracks and Rods = 1.9m x 2 units

Room 2084: 3 Units



1 Module opening: 3 units

Height = 3 m

Width= 3m x 3 units

Tracks and Rods = 1.9m x 3 units

Room 2086: 2 Units



1 Module opening: 2 units

Height = 3 m

Width= 3m x 2 units

Tracks and Rods = 1.9m x 2 units

e. Sunscreens

Sunscreens: 1.80 m Width x 3.75 m Height - as indicated in drawings

1. Sun Screen Fabrics in Roll Black Out for Offices

Ground Floor (GF): 101 units

- Block A: 25 units
- Block B: 24 units
- Block C: 52 units

First Floor (F1): 76 units

- Block B: 22 units
- Block C: 54 units

Second Floor (F2): 52 units

- Block B: 22 unit
- Block C: 30 units

2. Sun Screen Fabrics in Rolls No Black Out for Offices (Room 0058)

Ground Floor (GF): 5 units

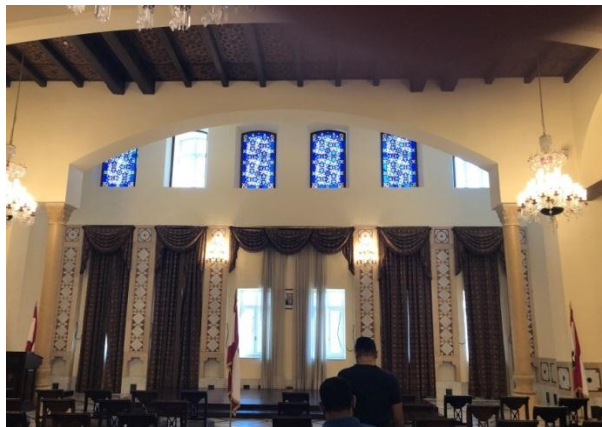
f. Rehabilitation of Existing Curtains:

- New Tracks (Rod) & New Sheer (**Block A-2 X Main Halls at The Entrance**)

Width-1



Width-2 &3



Sheer Unit Size:

Height = 5.5 m

Width1= 8m x 8 units

Width2= 4 m x 8 units

Width3= 9 m x 2 units

Rods and Tracks:

Width1= 4 m x 8 units

Width2= 2 x 8 units

Width3= 4.5 m x 2 units

II. PHASE -2

Works to be Done Upon Financing

بانتظار تامين قيمة التكاليف اللازمة

1. New Offices Cabinets

1) Wooden Ready-Made Cabinets

a. Grey Cabinets: 10 units - Similar to Existing

Number x Width x Depth x Height (lower part)

10 x 1.2m x 0.40m x 2 m

Number x Width x Depth x Height (upper part)

10 x 1.2m x 0.40m x 0.9 m



b. Brown Cabinets (Dark Wood) - Similar to Existing

Number x Width x Depth x Height

16 x 1.2m x 0.40m x 2m



- c. Brown Cabinets (Light Wood with dark borders) - Similar to Existing**
Number x Width x Depth x Height
2 x 1.2m x 0.40m x 2m



2) Metal Cabinets

a. Steel Metal Storage Cabinets:

Cabinets to ceiling with filing drawers at the first lower row (Vertical Filing Cabinet: 4 drawer each unit, width = 0.45 m, depth = 0.65m & height= 1.2 m) and upper cabinets to ceiling (width = 0.9 m, depth = 0.65m & height= 1.6 m) - Room 1150

VERTICAL FILING CABINET: 12 UNITS

Number x Width x Depth x Height

12 x 0.45m x 0.65m x 1.2m

UPPER CABINETS: 6 UNITS

6 x 0.9m x 0.65m x 1.6m

b. Double Tier Metal Locker:

Number x Width x Depth x Height

30 x 0.4 m x 0.4m x 2 m

2. New Customized Wooden Cabinets

1) Wooden Cabinets

a. Wood Cabinet with Space for Server (Computer)

-As indicated in drawings- Room 1149

Number x Width x Depth x Height

1 x 5m x 0.40m x 3m

b. Wood Cabinet with Space for Cooler & Microwave

-As indicated in drawings- Room 1157

Number x Width x Depth x Height

1 x 3m x 0.50m x 3m

c. Wood Storage Cabinet with Shelves for Cooler Bottles

-As indicated in drawings- Room 1157

Number x Width x Depth x Height

1 x 3m x 0.50m x 1m

d. Grey Wood Cabinet to Ceiling

-As indicated in drawings- Room 1121

Number x Width x Depth x Height

1 x 1.2m x 0.40m x 3m

1 x 1.5m x 0.40m x 3m

1 x 1.9m x 0.40m x 3m

3. Rehabilitation of Existing Wooden Cabinets' Skirting

Total Length = 66 m

F1 LM= 26 m

F2 LM= 40 m



4. New Wooden Cabinet Similar to Existing

Supply and Install New Oak Wood Cabinet (library) with **tempered glass leaves- 4 divisions:**

Similar to existing cabinets shape & with glass leaves.

Number x length x Depth x Height

2 x 5m x 0.4m x 3m



5. Closets

1) New Closets

New Closet with shelves Room 2034(Depth= 0.6 m)

Length x Height

8m x 3m = 24 m²

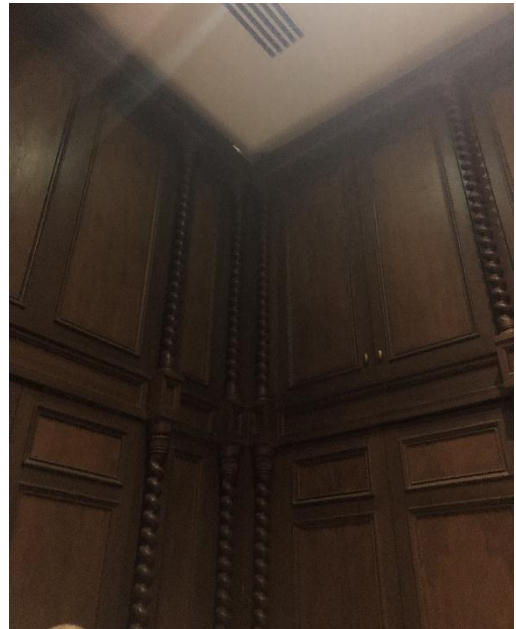


2) Closets Rehabilitation

Rehabilitation of Existing Wooden Closets Zone A –Including lighting fixtures- As indicated in drawings

F1 LM= 26 m

F2 LM= 26 m





6. New Chairs & Sofas Upholstery and Maintenance

a. New Chairs

36 New Chairs (Zein Wood Upholstered Chairs)



b. Chairs Maintenance

- 45 Burgers (Zein Wood Upholstered Chairs)



- 12 Burgers (Zein Wood Upholstered Chairs)



c. Sofas Maintenance

- 26 x 2 Seat Sofa Fabric
- 3x 3 Seats Sofas Fabric



- 1 x 2 Seat Sofa Fabric



- 1 x 2 Seat Sofa Fabric with Leather
- 1 x 3 Seat Sofa Fabric with Leather



- 4 x 3 Seat Sofa Fabric



d. Seat and Back seat Cushion Upholstery (Room 0048)

- 50 x Bed Seats: 75cm x 75 cm & 25 cm thick
- 50 x Back Seats: 75cm x 40 cm & 25 cm thick





e. Fabrication of New Seats and Back Cushions (Comfortable Sponge & First-Class Fabric)

- 10 x Bed Seats: 75cm x 75 cm & 25 cm thick
- 10 x Back Seats: 75cm x 40 cm & 25 cm thick



7. Wooden Tables

a) Tables' Maintenance

i. Rehabilitation of Existing Wooden Square Table -130cm x130cm x 75 cm:

Number of Tables x Length x Width x Height

45 x 130cm x130cm x 75 cm



ii. Rehabilitation of Existing Wooden Round Tables Top (Diameter 130 cm):

Rehabilitation of Round table top (diameter 130 cm): remove old border frame

& paint the whole top

Number. of round tables tops = 45 tops



b) New Wooden Tables Similar to Existing

i. New Wooden Square Tables – Similar to Existing:

12 new tables (130cm x130cm x height 75 cm) - Similar to existing

ii. New Wooden Round Tables Top (Diameter 130 cm):

12 new Round table tops (diameter 130 cm) - Similar to existing

8. Partitions (PARAVANT): 250cm x 60 cm x 180 cm

a. Wooden Partitions (PARAVANT): 250cm x 60 cm x 180 cm

i. Partitions' Maintenance

- Rehabilitation of Wooden Partition x 8 units
Number of Units x Length x Width x Height
8 x 250 cm x 60 cm x 180 cm



ii. New Partitions

- New Similar Wooden Partition x 6 units - Similar to existing
Number of Units x Length x Width x Height
6 x 250 cm x 60 cm x 180 cm

b. Fabric Partition (PARAVANT): 60cm x 250 cm x 180 cm

i. Partitions' Maintenance

- Rehabilitation of Fabric Partition x 6 units
Number of Units x Length x Width x Height
6 x 250 cm x 60 cm x 180 cm



ii. New Partitions

- New Similar Fabric Partition x 6 units - Similar to existing
Number of Units x Length x Width x Height
6 x 250 cm x 60 cm x 180 cm

9. Wooden Podium Rehabilitation

Rehabilitation of Wooden Podium (stage) = (10 m x 4.8m) x 2 (found at GF 2 side halls)

Total of 60 Units



10.Rehabilitation of Wooden Podium extensions



11.New Wooden Stands

a. New Wooden Stands (Similar to Existing)



b. Rehabilitation of Existing Press Stands

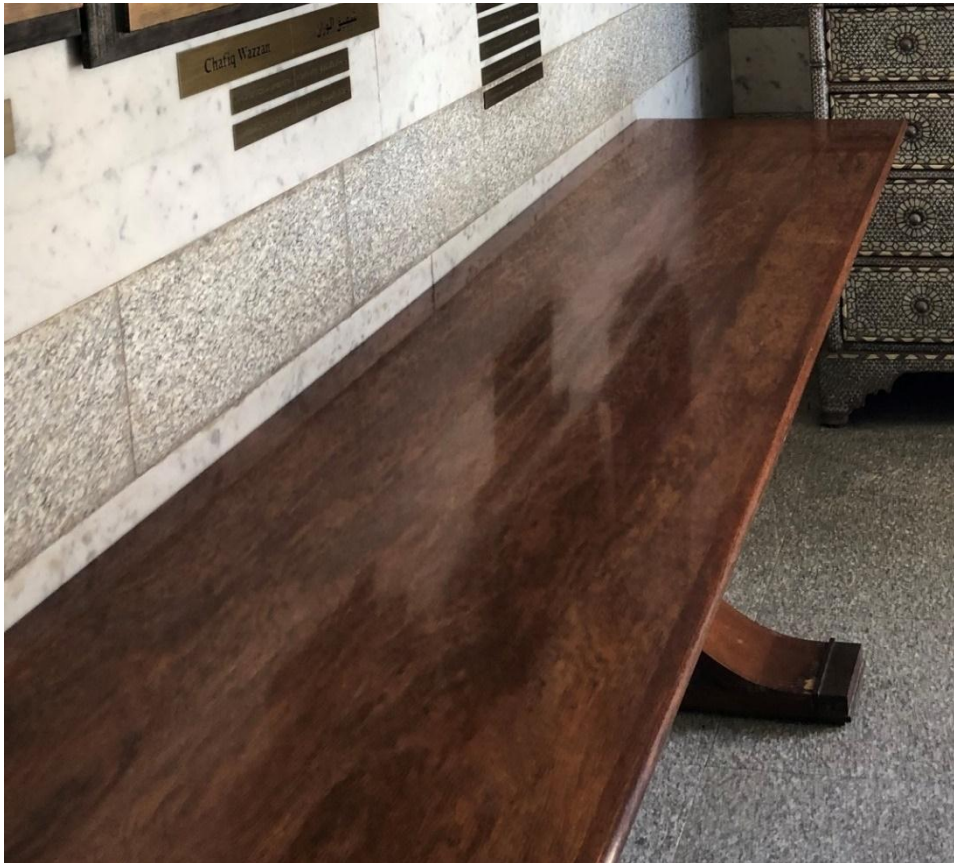
Rehabilitation of Press stands (2 Small units & 2 Large units)



12. Console Tables

a. Wooden Consoles Rehabilitation

Rehabilitation of Entrance console tables Base (adding copper protection below base) & rehabilitation / painting the damaged wooden parts: 4 console units



b. Stone Console

Rehabilitation of GF entrance stone console mirror & reinstall to its original form (by specialist): 1 Unit



c. Stone Table

Rehabilitation of marble table with wooden drawer: 3 Units



13. Conference Tables and Office Chairs

a. Rehabilitation of Minister's Meeting Room Conference Table

Rehabilitation of existing Minister's meeting room conference table: changing middle wooden part, painting, changing existing leather with a new similar one

~ 800 cm x 150 cm



b. New Conference Tables

New Oak Wood Conference Tables, 8 cm top thick, oak wood base x 3 units (conference table for 14-16 persons): ~ 460 cm x 150 cm



c. New Office Chairs

Presidential armchair for Conference Tables: 63 cm x 65 cm x H 112 cm

New 200 office chairs (mobile seats): Presidential armchair, high back rest, chromed armrests and base, synchro mechanism sliding seat, black castors, black artificial leather



14. Equipment

a. Ice Makers Machines

New Ice Makers Machines x 4 units

b. Press Screens

New Press Screens x 4 units

